

1 MAIN FLOOR PLAN - ELECTRICAL POWER DEMOLITION
E2 E2 SCALE: 1/8"=1'-0"

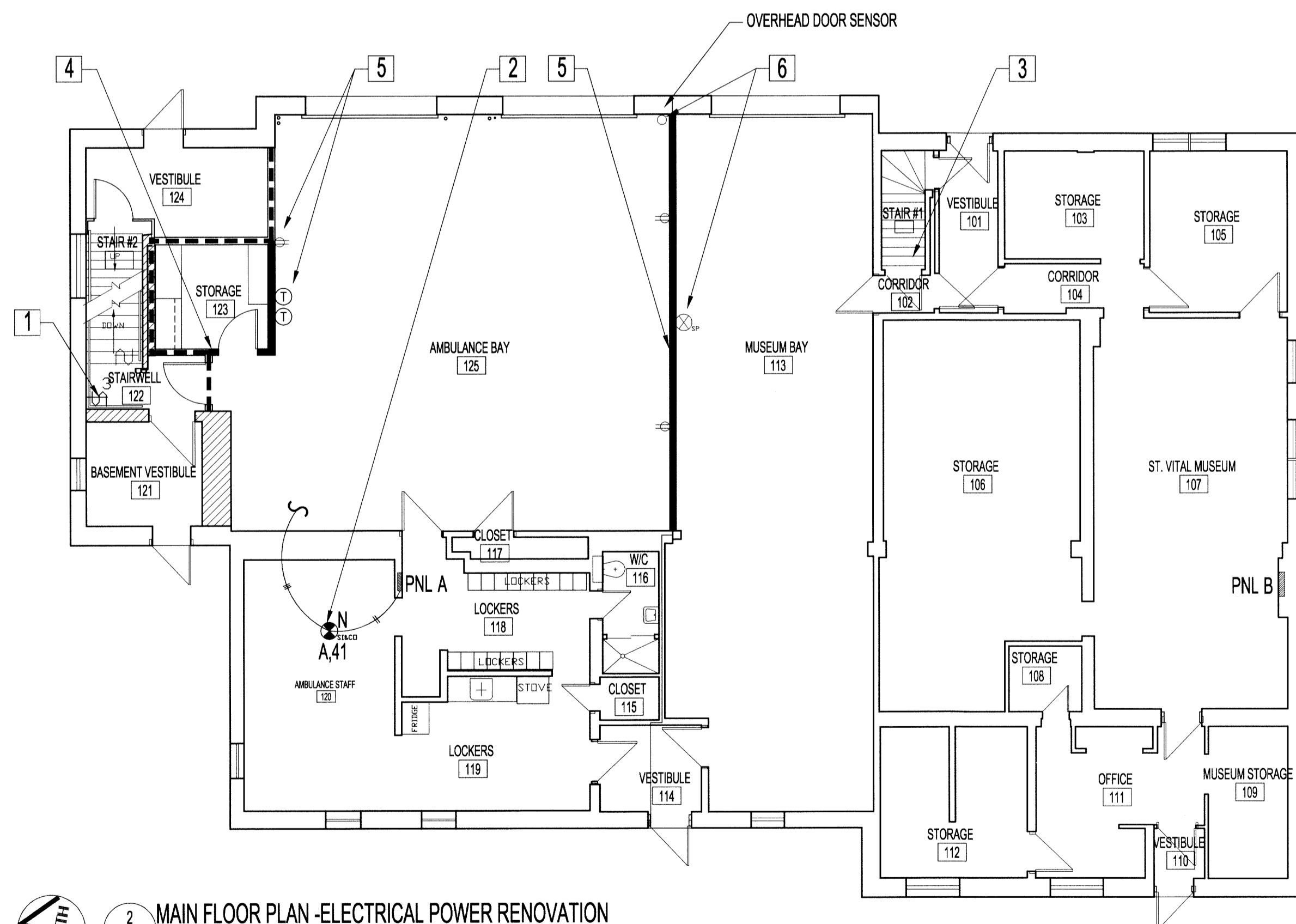
MAIN FLOOR ELECTRICAL DEMOLITION NOTES:
ALSO SEE ELECTRICAL SYMBOLS, NOTES & BASMENT ELECTRICAL RENOVATION DWG.

- 1 DISCONNECT, REMOVE & DISCARD EXISTING BASEMENT SINGLE POLE LIGHT SWITCH, CONNECTED WIRING & CIRCUIT BREAKER BACK TO PANEL 'A' CIRCUIT # 8.
- 2 DISCONNECT, REMOVE & DISCARD EXISTING SMOKE ALARM & WIRING BACK TO ELECTRICAL PANEL CONTRACTOR TO VERIFY.
- 3 DISCONNECT, REMOVE AND DISCARD EXISTING SINGLE POLE LIGHT SWITCH, CONNECTED WIRING BACK TO NEAREST JUNCTION BOX.
- 4 DISCONNECT, REMOVE AND DISCARD EXISTING RECEPTACLE, THERMOSTAT, CONNECTED WIRING AND CONDUIT BACK TO NEAREST JUNCTION BOX.
- 5 DISCONNECT, REMOVE AND DISCARD EXISTING RECEPTACLES, CONNECTED WIRING AND CONDUIT BACK TO NEAREST JUNCTION BOX.
- 6 DISCONNECT AND REMOVE OVERHEAD DOOR SENSOR AND SMOKE ALARM. KEEP TO RE-INSTALL AFTER NEW WALL IS BUILT.

PANEL 'A' (MAIN FLOOR AMBULANCE)		42-POLE		BUS RATING 225A		MOUNTING: RECESSED	
DEMAND LOAD	CONCTD LOAD	CIRCUIT DESCRIPTION	CIRCUIT NO. 15A 1P, (12" TANDEM BREAKERS) UNLESS OTHERWISE NOTED	CIRCUIT NO. 15A 1P, (12" TANDEM BREAKERS) UNLESS OTHERWISE NOTED	CIRCUIT DESCRIPTION	CONCTD LOAD	DEMAND LOAD
		STOVE	1	2	SIREN		
		STOVE	3	4	SIREN		
		COMPUTER PLUG	5	6	LOUNGE PLUGS		
		COUNTER PLUG	7	8	BASEMENT LIGHTS		
		MICROWAVE PLUGS	9	10	AMBULANCE ZONE CONTROL VALVE		
		KITCHEN PLUG	11	12	OFFICE AREA		
		OUTSIDE LIGHTS	13	14	NORTH OVERHEAD DOOR		
		CAR PLUG	15	16	SOUTH OVERHEAD DOOR		
		OUTSIDE LIGHTS	17	18	OUTSIDE LIGHTS		
		COMMUNICATION PLUG MIDDLE SHELF	19	20	LOCKER ROOM LIGHTS		
		KITCHEN LIGHTS	21	22	A/C WALL UNIT		
		EXHAUST FAN / CO DETECTOR	23	24	CAR PLUG		
		EAST UNIT HEATER	25	26	CAR PLUG		
		GARAGE PLUGS	27	28	ISOLATED GROUND RECEPTACLE TOP SHELF		
		GARAGE LIGHTS	29	30	COMMUNICATIONS PLUG U.P.S. INPUT		
		BACK ENTRANCE LIGHTS	31	32	A/C ROOF TOP		
		LOUNGE LIGHTS	33	34	A/C ROOF TOP		
		AIRVAC + CONTROL VOLTAGE IN PANEL	35	36	WEST UNIT HEATER		
		AIRVAC	37	38	SOUTH OVERHEAD DOOR		
		EMERGENCY & EXIT LIGHT BASEMENT	39	40	SOUTH OVERHEAD DOOR		
		CO & SMOKE DETECTORS BASEMENT & MAIN FLOOR	41	42	UPS		
					BASEMENT RECEPTACLES		

NOTES:

- CHECK CIRCUIT # 8
- CHECK ALL EXISTING ELECTRICAL LIGHTING, SWITCHES AND POWER SOURCES.
- VERIFY IF STAIRWAY (B01) LIGHT SWITCH IS START OF CIRCUIT.
- CHECK AMBULANCE ZONE CONTROL VALVES & WIRING ROUTE.



2 MAIN FLOOR PLAN - ELECTRICAL POWER RENOVATION
E2 E2 SCALE: 1/8"=1'-0"

MAIN FLOOR ELECTRICAL RENOVATION NOTES:
ALSO SEE ELECTRICAL SYMBOLS, NOTES & BASMENT ELECTRICAL RENOVATION DWG.

- 1 NEW 3 WAY SWITCH AT TOP OF STAIRWAY (B01) TO CONTROL BASEMENT FLUORESCENT LIGHT FIXTURES. SUPPLY & INSTALL DEDICATED CIRCUIT, 20AMP BREAKER. CONNECT & WIRE TO PANEL 'B' LOCATED IN MUSEUM SIDE OF BUILDING. SEE BASEMENT ELECTRICAL DWG FOR 2ND 3-WAY SWITCH LOCATION.
- 2 COMBINATION SMOKE & CARBON DIOXIDE DETECTOR WITH BATTERY BACK-UP. WIRE IN PARALLEL WITH (2) NEW BASEMENT DETECTORS. WIRE TO NEW MAIN FLOOR 120V DEDICATED CIRCUIT, 15 AMP BREAKER. SUPPLY & INSTALL EMT RISER FROM MAIN FLOOR DETECTOR TO BASEMENT DETECTORS.
- 3 RELOCATE EXISTING DEVICE BOX & BASEMENT BOILER GAS SHUT-OFF SWITCH TO TOP OF MAIN FLOOR STAIRWAY (B08). RUN EMT & WIRING FROM EXISTING POWER SOURCE TO NEW LOCATION. CONTRACTOR TO MAINTAIN INTER-CONNECTION BETWEEN EXISTING BOILER GAS SHUT-OFF SWITCH STAIRWAY LOCATED AT TOP OF STAIRWAY (B01).
- 4 RE-INSTALL AND CONNECT NEW LIGHT SWITCH.
- 5 RE-INSTALL AND CONNECT NEW RECEPTACLES, THERMOSTATS AND CONDUIT IN SAME LOCATION AS EXISTING EQUIPMENT.
- 6 RE-INSTALL AND CONNECT EXISTING OVERHEAD DOOR SENSOR AND SMOKE DETECTOR.

PANEL 'B' (MAIN FLOOR MUSEUM)		42-POLE		BUS RATING 225A		MOUNTING: RECESSED	
DEMAND LOAD	CONCTD LOAD	CIRCUIT DESCRIPTION	CIRCUIT NO. 15A 1P, (12" TANDEM BREAKERS) UNLESS OTHERWISE NOTED	CIRCUIT NO. 15A 1P, (12" TANDEM BREAKERS) UNLESS OTHERWISE NOTED	CIRCUIT DESCRIPTION	CONCTD LOAD	DEMAND LOAD
		A/C	1	2	THREE PHASE FOUR WIRE CONNECTIONS SHOWN		
		A/C	3	4	DEAD ENDED AT TIMER		
		COFFEE & KITCHEN RECEPT. RM. TS-5	5	6	LITES, RECEPT. 3RD FLR.		
		RECEPT. RM. TS-5	7	8	LIGHTS, RM. TS-3 & TS-4		
		RECEPT. RM. TS-5	9	10	LIGHTS, RM. TS-4, 5 & 6		
		RECEPT. SECOND FLR. RM. 215	11	12	RECEPT. RM. TS-5 & TS-7		
		RM. 201, READER & PRINTER	13	14	LIGHTS, RM. TS-7 & TS-8 WALL & EXHAUST FAN		
		LIGHTS, RECEPT. TS 1&9	15	16	RECEPT. RM. TS-8		
		CONDENSATE PUMP	19	20	RECEPT. RM. TS-8 & TS-??		
		230V CONDENSATE PUMP	21	22	LIGHTS, RM. TS-8 & EXHAUST FAN		
		SPACE	23	24	RECEPT. RM. TS-4		
		SPACE	25	26	LIGHTS-BASEMENT WASHRM. & LOCKER ROOM		
		SPACE	27	28	LIGHTS CRAWLSPACE		
		SPACE	29	30	RECEPT. RMS. TS2 & TS3 RALPHS RM.		
		SPACE	31	32	LIGHTS, RM. TS-2 OUTSIDE LIGHTS		
		SPACE	33	34	NOT LOCATED		
		SPACE	35	36	BASEMENT LIGHTS		
		SPACE	37	38	RECEPT. RM. TS-4		
		SPACE	39	40	MOTORIZED VALVES		
		SPACE	41	42	RECEPT. OUTSIDE SOUTH WALL		

0	ISSUED FOR CONSTRUCTION	AP	AUG 15 2014
No.	REVISION/DESCRIPTION	BY	DATE

SEAL

DRAWN: JAWRCP
DATE: 2014.07.14
CHECKED: [Signature]
DESIGNED: [Signature]
APPROVED: [Signature]

THE CITY OF WINNIPEG
PLANNING, PROPERTY AND DEVELOPMENT DEPARTMENT
MUNICIPAL ACCOMMODATIONS DIVISION
3-65 GARRY STREET, R3C 4K4

PROJECT
AMBULANCE STATION # 3
STRUCTURAL & OCCUPANCY UPGRADES
DESIGN OF STRUCTURAL UPGRADES

598 ST. MARY'S ROAD		
SHEET TITLE		
MAIN FLOOR PLAN ELECTRICAL DEMOLITION & RENOVATION		
SCALE: AS SHOWN	PROJECT No: 2013-047	SHEET No: E2

KGS GROUP
CONSULTING ENGINEERS
APEGM
Certificate of Authorization
KGS GROUP
No. 245